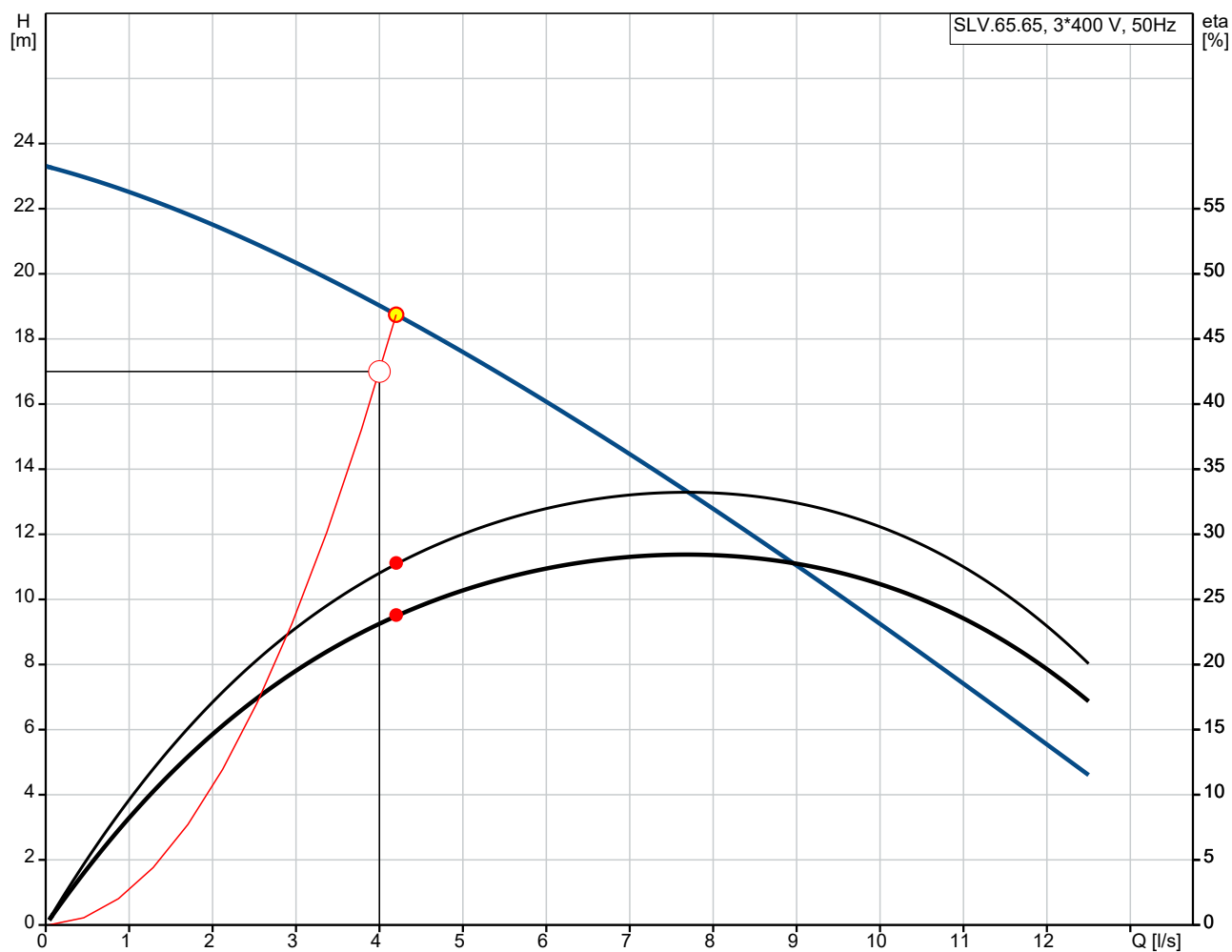


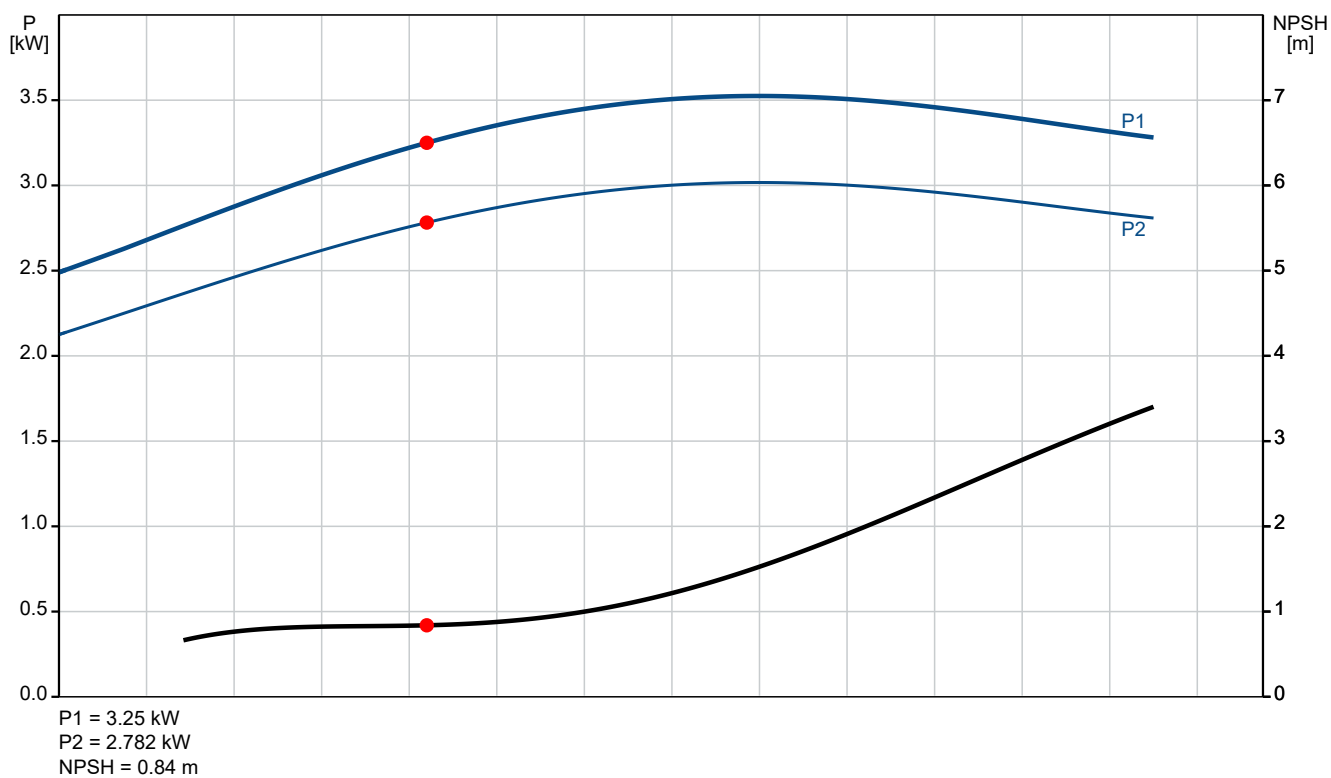
Qty.	Description																																																																																		
1	<p>SLV.65.65 .30.2.50D.C Product No.: On request</p> <p>Non-self-priming, single-stage, centrifugal pump designed for handling wastewater, process water and unscreened raw sewage.</p> <p>The pump is designed for intermittent and continuous operations in submerged installation. The efficient SuperVortex impeller provides passage of long fibres and solids up to 65 mm and is suitable for wastewater with a dry matter content of up to 5 %. A unique stainless-steel clamp assembling system enables quick and easy disassembly of the pump from the motor unit for service and inspection. No special tools are required. Pipework connection is via a DIN flange.</p> <p>Controls:</p> <table> <tr> <td>Moisture sensor:</td><td>with moisture sensors</td></tr> <tr> <td>Water-in-oil sensor:</td><td>without water-in-oil sensor</td></tr> </table> <p>Liquid:</p> <table> <tr> <td>Liquid temperature range:</td><td>10 .. 40 °C</td></tr> <tr> <td>Selected liquid temperature:</td><td>20 °C</td></tr> <tr> <td>Density:</td><td>998.2 kg/m³</td></tr> </table> <p>Technical:</p> <table> <tr> <td>Actual calculated flow:</td><td>4.2 l/s</td></tr> <tr> <td>Maximum flow:</td><td>12.5 l/s</td></tr> <tr> <td>Resulting head of the pump:</td><td>18.74 m</td></tr> <tr> <td>Type of impeller:</td><td>SUPER VORTEX</td></tr> <tr> <td>Maximum particle size:</td><td>65 mm</td></tr> <tr> <td>Primary shaft seal:</td><td>SIC/SIC</td></tr> <tr> <td>Approvals:</td><td>CE EN12050-1</td></tr> <tr> <td>Curve tolerance:</td><td>ISO9906:2012 3B2</td></tr> <tr> <td>Rated speed:</td><td>2909 rpm</td></tr> </table> <p>Materials:</p> <table> <tr> <td>Pump housing:</td><td>Cast iron EN 5.1301 EN-GJL-250</td></tr> <tr> <td>Impeller:</td><td>Cast iron EN 5.1301 EN-GJL-250</td></tr> <tr> <td>Motor:</td><td>EN-GJL-250</td></tr> </table> <p>Installation:</p> <table> <tr> <td>Range of ambient temperature:</td><td>0 .. 40 °C</td></tr> <tr> <td>Maximum operating pressure:</td><td>6 bar</td></tr> <tr> <td>Flange standard:</td><td>DIN</td></tr> <tr> <td>Type of inlet connection:</td><td>DIN</td></tr> <tr> <td>Type of outlet connection:</td><td>DIN</td></tr> <tr> <td>Size of inlet connection:</td><td>DN 80</td></tr> <tr> <td>Size of outlet connection:</td><td>DN 65</td></tr> <tr> <td>Pressure rating:</td><td>PN 10</td></tr> <tr> <td>Maximum installation depth:</td><td>20 m</td></tr> <tr> <td>Auto-coupling:</td><td>96090992</td></tr> <tr> <td>Frame range:</td><td>B</td></tr> </table> <p>Electrical data:</p> <table> <tr> <td>Power input - P1:</td><td>3.8 kW</td></tr> <tr> <td>Rated power - P2:</td><td>3 kW</td></tr> <tr> <td>Mains frequency:</td><td>50 Hz</td></tr> <tr> <td>Rated voltage:</td><td>3 x 380-415 V</td></tr> <tr> <td>Voltage tolerance:</td><td>+10/-10 %</td></tr> <tr> <td>Max starts per hour:</td><td>20</td></tr> <tr> <td>Rated current:</td><td>6.4 A</td></tr> <tr> <td>Cos phi - power factor:</td><td>0.85</td></tr> <tr> <td>Cos phi - p.f. at 3/4 load:</td><td>0.79</td></tr> <tr> <td>Cos phi - p.f. at 1/2 load:</td><td>0.67</td></tr> <tr> <td>Rated speed:</td><td>2909 rpm</td></tr> <tr> <td>Motor efficiency at full load:</td><td>85.6 %</td></tr> <tr> <td>Motor efficiency at 3/4 load:</td><td>85.6 %</td></tr> </table>	Moisture sensor:	with moisture sensors	Water-in-oil sensor:	without water-in-oil sensor	Liquid temperature range:	10 .. 40 °C	Selected liquid temperature:	20 °C	Density:	998.2 kg/m ³	Actual calculated flow:	4.2 l/s	Maximum flow:	12.5 l/s	Resulting head of the pump:	18.74 m	Type of impeller:	SUPER VORTEX	Maximum particle size:	65 mm	Primary shaft seal:	SIC/SIC	Approvals:	CE EN12050-1	Curve tolerance:	ISO9906:2012 3B2	Rated speed:	2909 rpm	Pump housing:	Cast iron EN 5.1301 EN-GJL-250	Impeller:	Cast iron EN 5.1301 EN-GJL-250	Motor:	EN-GJL-250	Range of ambient temperature:	0 .. 40 °C	Maximum operating pressure:	6 bar	Flange standard:	DIN	Type of inlet connection:	DIN	Type of outlet connection:	DIN	Size of inlet connection:	DN 80	Size of outlet connection:	DN 65	Pressure rating:	PN 10	Maximum installation depth:	20 m	Auto-coupling:	96090992	Frame range:	B	Power input - P1:	3.8 kW	Rated power - P2:	3 kW	Mains frequency:	50 Hz	Rated voltage:	3 x 380-415 V	Voltage tolerance:	+10/-10 %	Max starts per hour:	20	Rated current:	6.4 A	Cos phi - power factor:	0.85	Cos phi - p.f. at 3/4 load:	0.79	Cos phi - p.f. at 1/2 load:	0.67	Rated speed:	2909 rpm	Motor efficiency at full load:	85.6 %	Motor efficiency at 3/4 load:	85.6 %
Moisture sensor:	with moisture sensors																																																																																		
Water-in-oil sensor:	without water-in-oil sensor																																																																																		
Liquid temperature range:	10 .. 40 °C																																																																																		
Selected liquid temperature:	20 °C																																																																																		
Density:	998.2 kg/m ³																																																																																		
Actual calculated flow:	4.2 l/s																																																																																		
Maximum flow:	12.5 l/s																																																																																		
Resulting head of the pump:	18.74 m																																																																																		
Type of impeller:	SUPER VORTEX																																																																																		
Maximum particle size:	65 mm																																																																																		
Primary shaft seal:	SIC/SIC																																																																																		
Approvals:	CE EN12050-1																																																																																		
Curve tolerance:	ISO9906:2012 3B2																																																																																		
Rated speed:	2909 rpm																																																																																		
Pump housing:	Cast iron EN 5.1301 EN-GJL-250																																																																																		
Impeller:	Cast iron EN 5.1301 EN-GJL-250																																																																																		
Motor:	EN-GJL-250																																																																																		
Range of ambient temperature:	0 .. 40 °C																																																																																		
Maximum operating pressure:	6 bar																																																																																		
Flange standard:	DIN																																																																																		
Type of inlet connection:	DIN																																																																																		
Type of outlet connection:	DIN																																																																																		
Size of inlet connection:	DN 80																																																																																		
Size of outlet connection:	DN 65																																																																																		
Pressure rating:	PN 10																																																																																		
Maximum installation depth:	20 m																																																																																		
Auto-coupling:	96090992																																																																																		
Frame range:	B																																																																																		
Power input - P1:	3.8 kW																																																																																		
Rated power - P2:	3 kW																																																																																		
Mains frequency:	50 Hz																																																																																		
Rated voltage:	3 x 380-415 V																																																																																		
Voltage tolerance:	+10/-10 %																																																																																		
Max starts per hour:	20																																																																																		
Rated current:	6.4 A																																																																																		
Cos phi - power factor:	0.85																																																																																		
Cos phi - p.f. at 3/4 load:	0.79																																																																																		
Cos phi - p.f. at 1/2 load:	0.67																																																																																		
Rated speed:	2909 rpm																																																																																		
Motor efficiency at full load:	85.6 %																																																																																		
Motor efficiency at 3/4 load:	85.6 %																																																																																		

Qty.	Description
1	<div> <div> <div>Motor efficiency at 1/2 load:</div> <div>84.0 %</div> </div> <div> <div>Number of poles:</div> <div>2</div> </div> <div> <div>Start. method:</div> <div>direct-on-line</div> </div> <div> <div>Enclosure class (IEC 34-5):</div> <div>IP68</div> </div> <div> <div>Insulation class (IEC 85):</div> <div>H</div> </div> <div> <div>Explosion proof:</div> <div>no</div> </div> <div> <div>Cable type:</div> <div>07RN8-F</div> </div> <div> <div>Length of power cable:</div> <div>10 m</div> </div> <div> <div>Others:</div> <div></div> </div> <div> <div>Net weight:</div> <div>92.6 kg</div> </div> <div> <div>Danish VVS No.:</div> <div>391298183</div> </div> <div> <div>Finnish LVI No.:</div> <div>4836131</div> </div> </div>

On request SLV.65.65 .30.2.50D.C 50 Hz

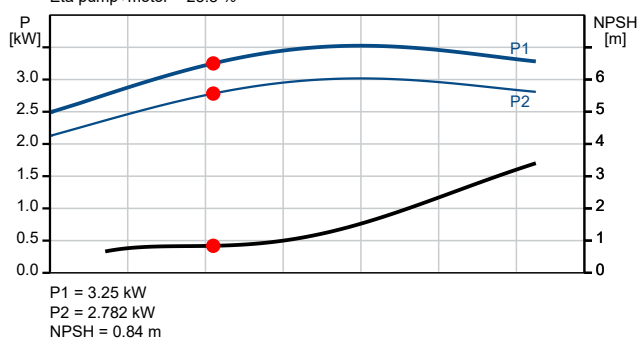
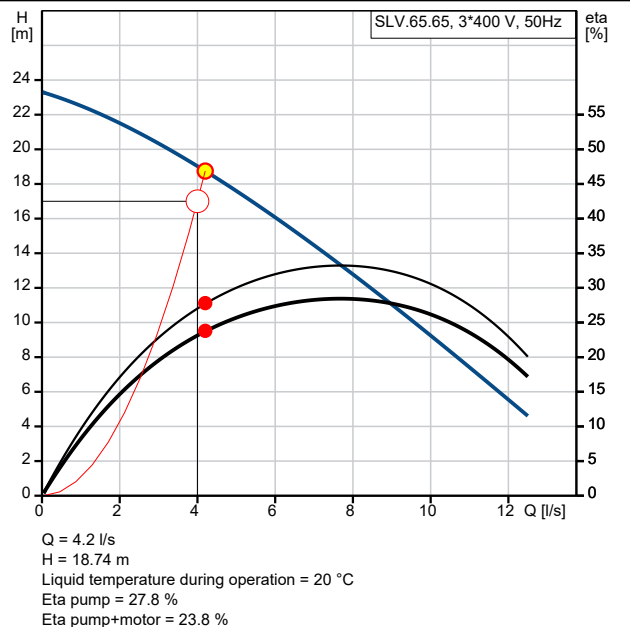


Q = 4.2 l/s
H = 18.74 m
Liquid temperature during operation = 20 °C
Eta pump = 27.8 %
Eta pump+motor = 23.8 %



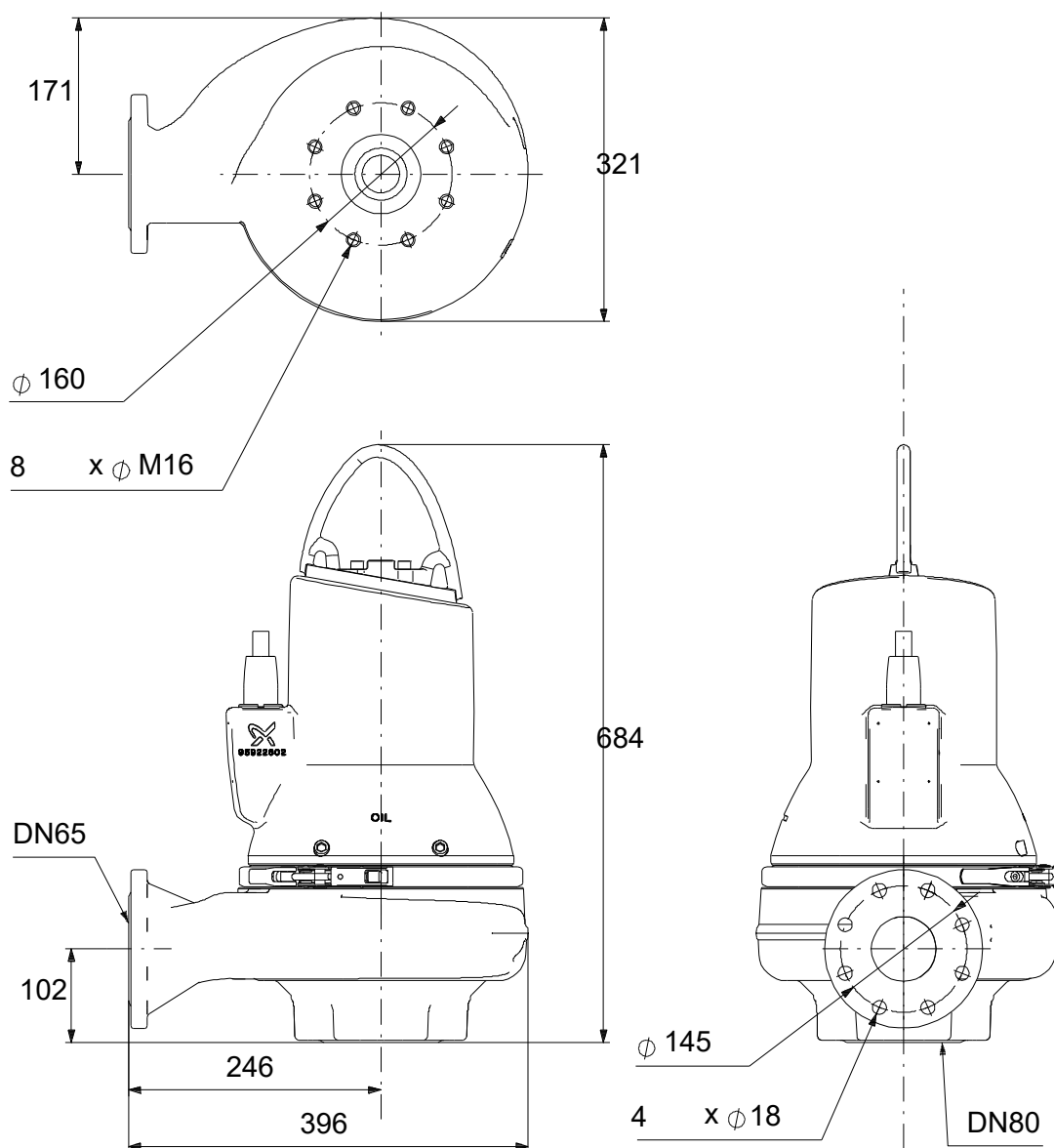
P1 = 3.25 kW
P2 = 2.782 kW
NPSH = 0.84 m

Description	Value
General information:	
Product name:	SLV.65.65 .30.2.50D.C
Product No:	On request
EAN number:	On request
Technical:	
Actual calculated flow:	4.2 l/s
Maximum flow:	12.5 l/s
Resulting head of the pump:	18.74 m
Maximum head:	23.3 m
Type of impeller:	SUPER VORTEX
Maximum particle size:	65 mm
Primary shaft seal:	SIC/SIC
Approvals:	CE EN12050-1
Curve tolerance:	ISO9906:2012 3B2
Cooling jacket:	without cooling jacket
Rated speed:	2909 rpm
Materials:	
Pump housing:	Cast iron
Pump housing:	EN 5.1301 EN-GJL-250
Impeller:	Cast iron
Impeller:	EN 5.1301 EN-GJL-250
Motor:	EN-GJL-250
Installation:	
Range of ambient temperature:	0 .. 40 °C
Maximum operating pressure:	6 bar
Flange standard:	DIN
Type of inlet connection:	DIN
Type of outlet connection:	DIN
Size of inlet connection:	DN 80
Size of outlet connection:	DN 65
Pressure rating:	PN 10
Maximum installation depth:	20 m
Inst dry/wet:	SUBMERGED
Installation:	Vertical
Auto-coupling:	96090992
Frame range:	B
Liquid:	
Liquid temperature range:	10 .. 40 °C
Selected liquid temperature:	20 °C
Density:	998.2 kg/m ³
Electrical data:	
Power input - P1:	3.8 kW
Rated power - P2:	3 kW
Mains frequency:	50 Hz
Rated voltage:	3 x 380-415 V
Voltage tolerance:	+10/-10 %
Max starts per hour:	20
Rated current:	6.4 A
Cos phi - power factor:	0.85
Cos phi - p.f. at 3/4 load:	0.79
Cos phi - p.f. at 1/2 load:	0.67
Rated speed:	2909 rpm
Motor efficiency at full load:	85.6 %
Motor efficiency at 3/4 load:	85.6 %
Motor efficiency at 1/2 load:	84.0 %
Number of poles:	2
Start. method:	direct-on-line
Enclosure class (IEC 34-5):	IP68
Insulation class (IEC 85):	H
Explosion proof:	no
Built-in motor protection:	THERMAL SWITCH
Cable type:	07RN8-F
Length of power cable:	10 m
Controls:	



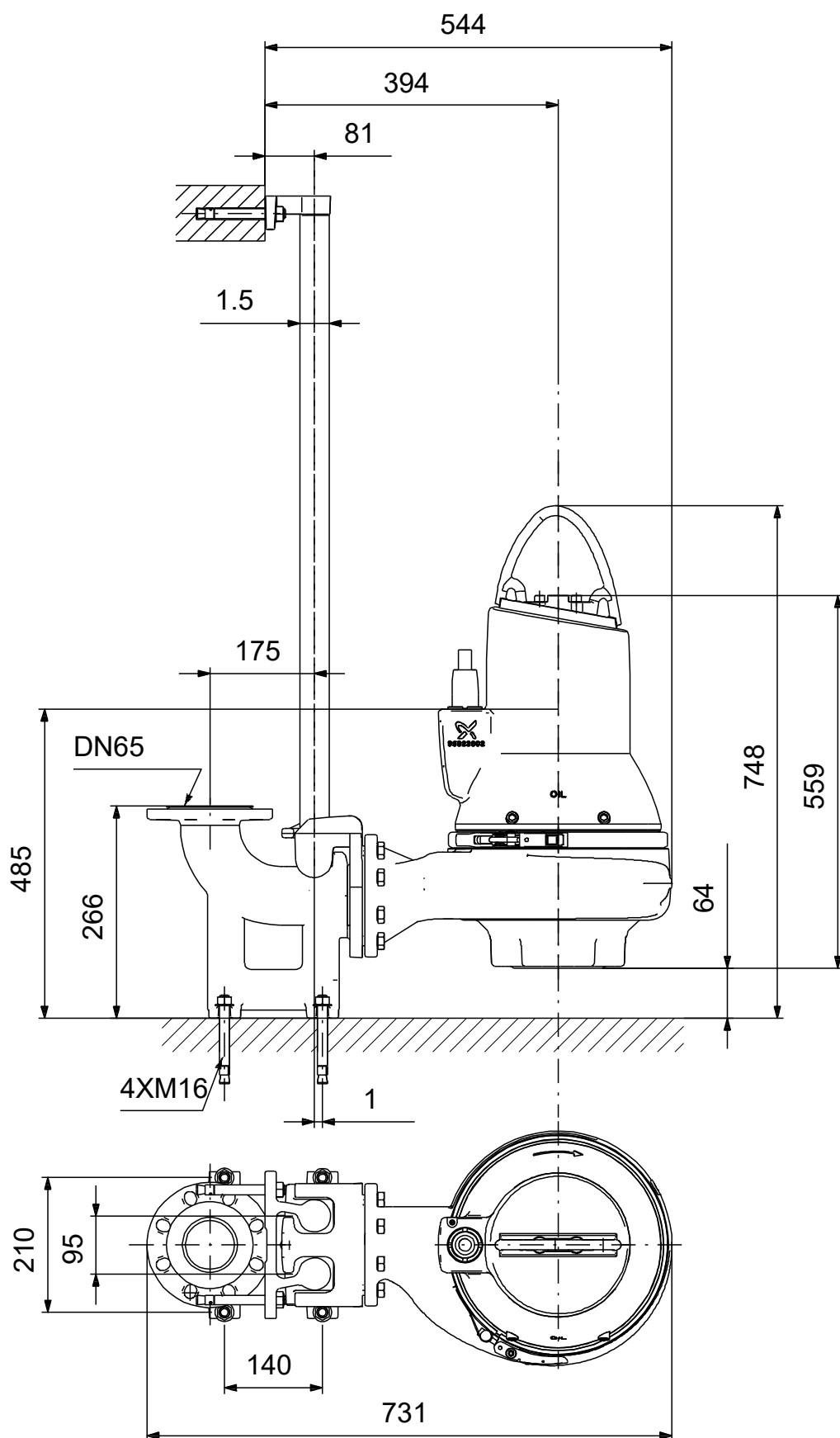
Description	Value
Control box:	not included
Moisture sensor:	with moisture sensors
Water-in-oil sensor:	without water-in-oil sensor
Others:	
Net weight:	92.6 kg
Danish VVS No.:	391298183
Finnish LVI No.:	4836131

On request SLV.65.65 .30.2.50D.C 50 Hz



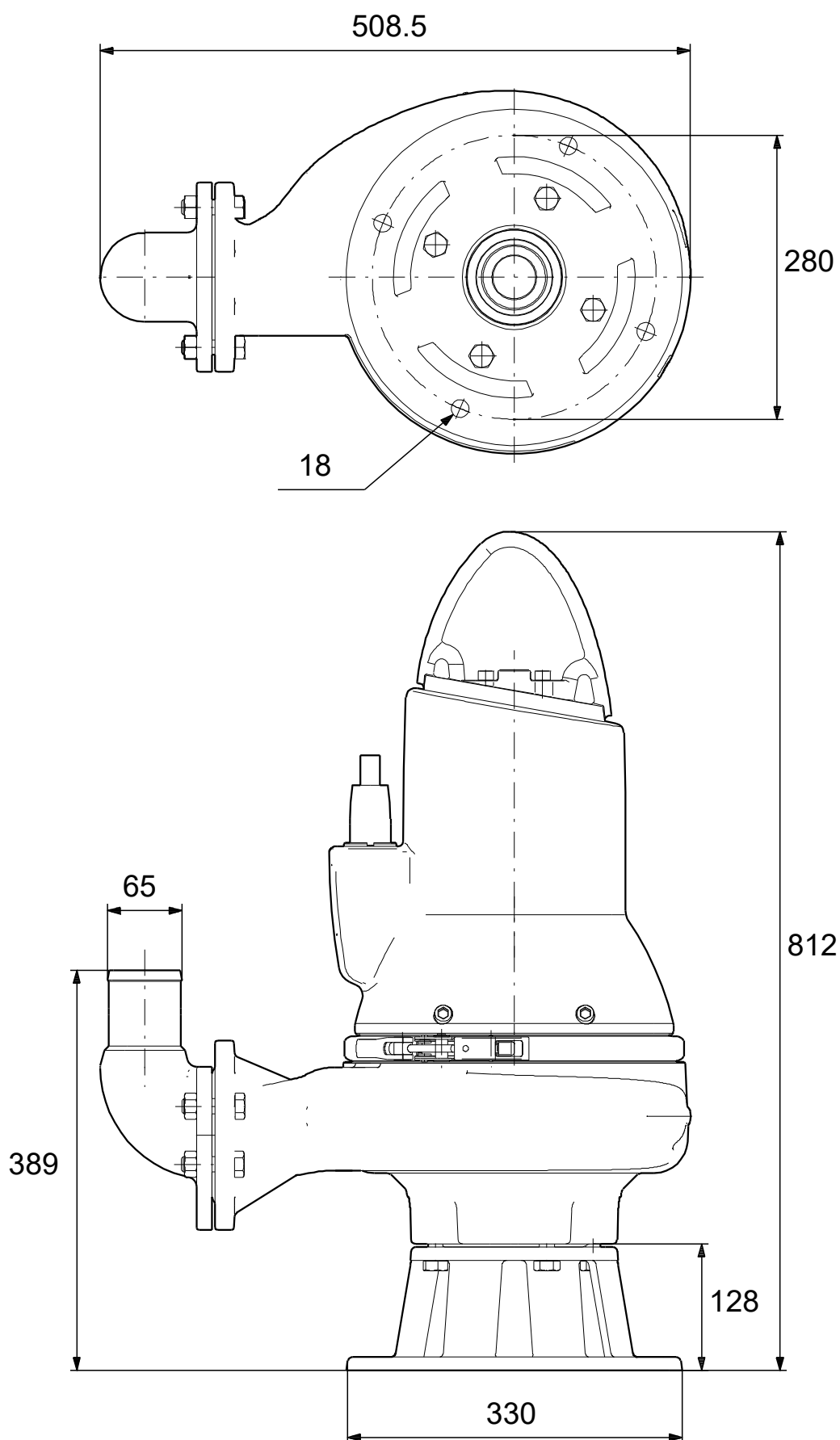
Note! All units are in [mm] unless others are stated.
Disclaimer: This simplified dimensional drawing does not show all details.

On request SLV.65.65 .30.2.50D.C 50 Hz



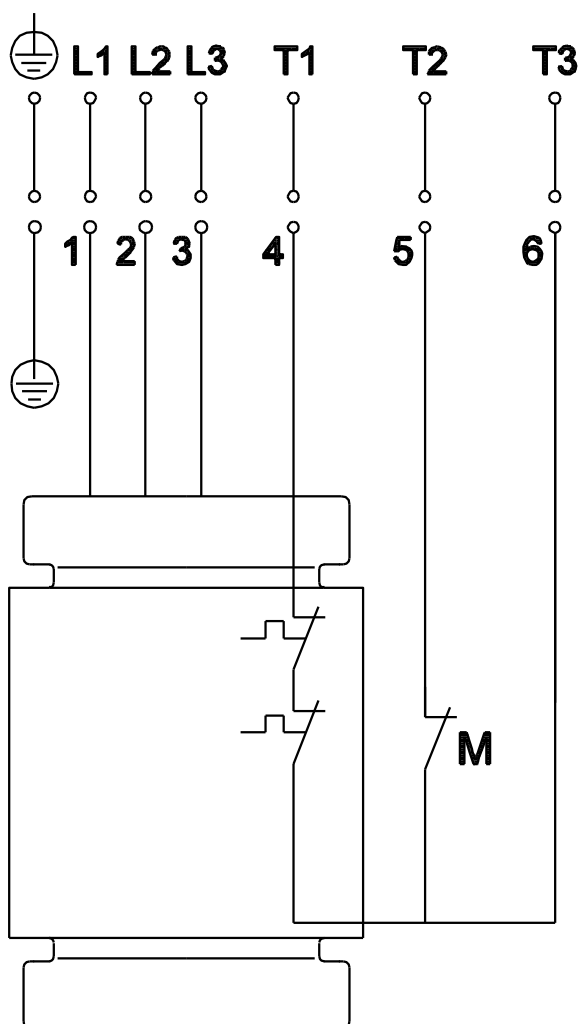
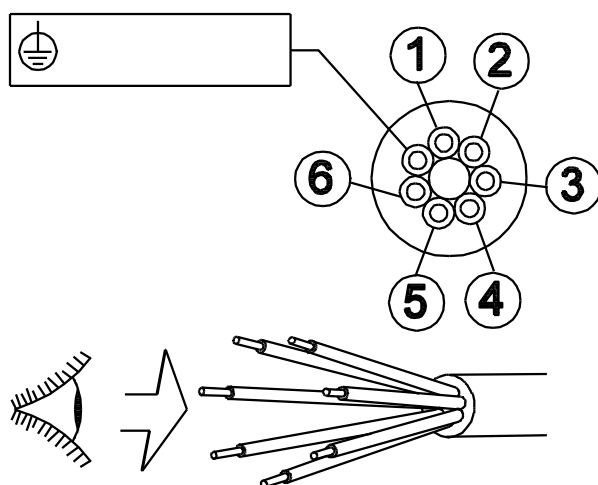
Note! All units are in [mm] unless others are stated.
Disclaimer: This simplified dimensional drawing does not show all details.

On request SLV.65.65 .30.2.50D.C 50 Hz



Note! All units are in [mm] unless others are stated.
Disclaimer: This simplified dimensional drawing does not show all details.

On request SLV.65.65 .30.2.50D.C 50 Hz



Note! All units are in [mm] unless others are stated.